

USA & GLOBAL
MANUFACTURING



SPECIALS

July 1, 2020 to September 30, 2020



Represented by :
E.D.A. International Corp.
4907 SW 75th Ave.
Miami, FL 33155
Phone: (305) 669-1894 ; Fax: (305) 669-1797
e-mail : sales@edainternational.com

HEATER

PROOFERS



KNOCK-DOWN HEATER PROOFER

MODEL NHPL-1834-KD-E

Non-Insulated Unit
Assembles in 30 minutes!
Analog Drawer, Ships KD to save on freight!
Pan Capacity: (34) 18" x 26"
Dimensions: 21"W x 30¾"L x 66½"H

Price

\$1109

INSULATED HEATER PROOFER

MODEL INHPL-1836C-DGT

Insulated Unit
Digital Drawer
Pan Capacity: (35) 18" x 26"
Dimensions: 24"W x 34"L x 68H

Price

\$1504

STANDARD HEATER PROOFER

MODEL NHPL-1836C-DGT

Non-Insulated Unit, Corner Bumpers
Digital Drawer
Pan Capacity: (35) 18" x 26"
Dimensions: 21"W x 30¾"L x 66½"H

Price

\$1304



HALF HEIGHT HEATER PROOFER

MODEL NHPL-1810HHC

Non-Insulated Unit, Poly Top Work Surface
Analog Drawer, Corner Bumpers
Pan Capacity: (10) 18" x 26"
Dimensions: 21"W x 30¾"L x 30½"H
FOB CA

Price

\$998



Send purchase orders to sales@edainternational.com

Heater Proofers Forced air design provide even heat distribution. Clear Lexan Door. Easy dual proof/heat control: "Proof/Humidity" mode up to 95% humidity at 110°F(43°C), "Heat" mode: Maximum temperatures up to 180°F (82°C),Electrical: 120 VAC-60 Hz, 14 amps- 1440 Watts- Standard 110 outlet.



ECONOMY HEATER PROOFER

MODEL NHPL-1836-ECOC

Non-Insulated Unit
without bumpers, Analog Drawer
Pan Capacity: (35) 18" x 26"
Dimensions: 21"W x 30¾"L x 66½"H

Price

\$1221



DUTCH DOOR HEATER PROOFER

MODEL NHPL-1833-ECOC-2D

Non-Insulated Unit
with Analog Drawer
Pan Capacity: (33) 18" x 26"
Dimensions: 21"W x 32"L x 66½"H

Price

\$1204

UNIVERSAL RUNNER HEATER PROOFER

MODEL NHPL-1825-UNC-DGT

Non-Insulated Unit
Digital Drawer, Corner Bumpers
Pan Capacity: (28) 18" x 26"
Dimensions: 26"W x 32"L x 72"H

Price

\$1471



**ASK ABOUT OUR CONTAINER
DIRECT PROGRAM
FOR VOLUME ORDERS
& DISCOUNTS!**

USA & GLOBAL
MANUFACTURING



Send purchase orders to sales@edainternational.com

Enclosed Mobile

CABINETS

Aluminum enclosed mobile cabinets stores and transports goods, perfect for meal delivery, sanitary and rustproof.

ENCLOSED MOBILE CABINETS

All welded reinforced non-insulated aluminum. 1-1/2" spacing between runners. Maneuverable on (4) 5" polyurethane swivel plate double ball race casters.



MODEL EC1840-C
21" W x 27" L x 68" H
Capacity 40 18" x 26" Trays

Price

\$440

MODEL EC1816-C
21" W x 27" L x 32"
Capacity 16 18" x 26" Trays

Price

\$583

MODEL EC1824-C
21" W x 27" L x 44"
Capacity 24 18" x 26" Trays

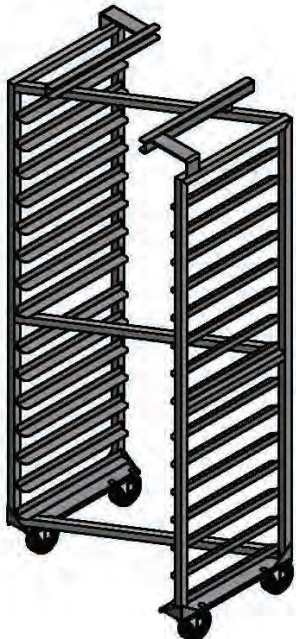
Price

\$665

MODEL EC1832-C
21" W x 27" L x 56"
Capacity 32 18" x 26" Trays

Price

\$753



OVEN RACK STAINLESS STEEL NESTING

MODEL SOVS2615BX2-N

Stainless steel oven rack, single, side loading, 15 pan capacity. Designed for a Baxter oven, Z nesting design to save space. B lift design. For a complete drawing for compatibility please contact sales@winholt.com Dimensions: 18"W x 28^{3/8"}L x 69^{13/16"}H

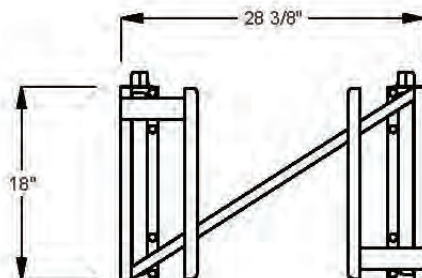
In Stock Ready to Ship!

Price

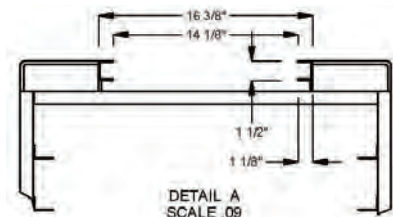
\$545



Top View



Side View



Send purchase orders to sales@edainternational.com



Organizes can stock and maximizes available space. Self-feeding feature keeps stock rotated. Vertical uprights and cross braces are constructed of 1-1/2" aluminum tubing



Price

\$548

CAN DISPENSING RACK Full Size

MODEL CR-162

All welded aluminum, CR-162 units hold 162 #10 cans or 216 # 5 cans. Dimensions:

25^{1/4}"W x 35"L x 71"H



Price

\$575

CAN DISPENSING RACK Full Size, Mobile

MODEL CR-162M

All welded aluminum, CR-162M units hold 162 #10 cans or 216 # 5 cans. Mobile unit has 5" polyurethane casters, two with brakes.

Dimensions: 27^{1/2}"W x 35"L x 76"H



Price

\$542

CAN DISPENSING RACK Half Size, Mobile, Poly Top

MODEL CR-54PT

All welded aluminum, CR-54 holds 54 #10 cans or 72 #5 cans and has a polytop ideal for a work station. Mobile unit has 5" polyurethane casters, two with brakes. Half size racks are also available with stainless steel and aluminum tops. Dimensions: 27^{1/2}"W x 35"L x 35"H



Send purchase orders to sales@edainternational.com

PAN

RACKS



**PAN RACK
ALL WELDED**

MODEL AL-1820B

Heavy duty aluminum frame with welded angle slides, 3" spacing between runners. 5" polyurethane swivel stem casters. Capacity: (20) 18" x 26" sheet pans, Wt. capacity per runner 30lbs
Dimensions: 21"W x 26"L x 69¾"H
Standard lead time applies.



Price

\$214



**HD PAN RACK
REINFORCED UPRIGHTS**

MODEL AL-1820B-XB

Heavy duty aluminum frame with welded angle slides, 3" spacing between runners. 5" polyurethane swivel stem casters. Capacity: (20) 18" x 26" sheet pans, Wt. capacity per runner 60lbs
Dimensions: 21"W x 26"L x 69¾"H
Standard lead time applies.



Price

\$276



**PAN RACK
KNOCK-DOWN**

MODEL ADE1820B-KDA

3" spacing between runners. Capacity of (20) 18" x 26" sheet pans. 5" swivel stem casters with polyolefin wheels. Wt. capacity per runner 20lbs
Dimensions: 21"W x 26"L x 69"H

In Stock Ready to Ship!



Price

\$134



Represented by :
E.D.A. International Corp.
4907 SW 75th Ave.
Miami, FL 33155
Phone: (305) 669-1894 ; Fax: (305) 669-1797
e-mail : sales@edainternational.com



PAN RACK KNOCK-DOWN Heavy Duty

MODEL ADE1820KD-HD

3" spacing between runners. Capacity of (20) 18" x 26" sheet pans. 5" swivel stem casters with polyolefin wheels. Wt. capacity per runner 30lbs
Dimensions: 21"W x 26"L x 69"H

In Stock Ready to Ship!

Price

\$163



STAINLESS STEEL NESTING PAN RACK

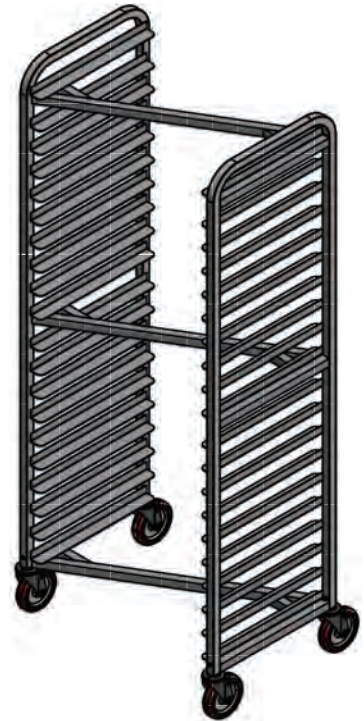
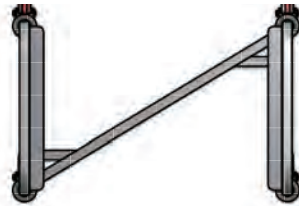
MODEL SS-2620

Racks nest to save valuable floor space. 3" spacing between runners. Capacity of (20) 18" x 26" sheet pans. 5" swivel stem casters with polyurethane wheels.
Dimensions: 18"W x 20-3/8"L x 70"H

In Stock Ready to Ship!

Price

\$472



Send purchase orders to sales@edainternational.com

TRENDING

SHELVING



CANTILEVER SHELVING



MODEL SCAS-2148-4-SU
(4) SHELF TUBULAR STARTER KIT

INCLUDES:

- (1) RIGHT UPRIGHT
- (1) LEFT UPRIGHT
- (2) CROSS BRACES
- (4) SHELVES
- (1) HARDWARE KIT

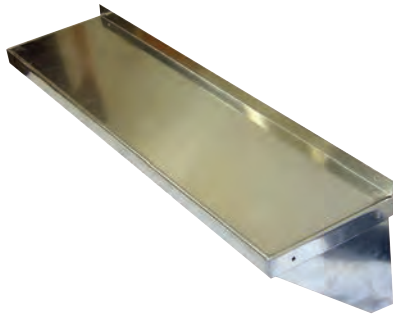
Dimensions: 21"W x 48"L x 72"H

Price

\$392

All welded aluminum tubular shelving. Maximum capacity 2,500 lb per section. Maximizes storage, free standing shelving allows access to all corners. Picture shown show (2) units.

In Stock Ready to Ship!



ALUMINUM WALL SHELVES KNOCK-DOWN



MODEL ALWMS-1236
Dimensions: 12"W x 36"L

Price

\$49

MODEL ALWMS-1260
Dimensions: 12"W x 60"L

\$63

Aluminum construction. Shelves feature a marine edge to help prevent spills from coming over the edges. Adds extra storage space to any wall.

In Stock Ready to Ship!



PLASTIC DUNNAGE RACKS

Price

MODEL DPLSQ-3-1222-BK
22" W x 36" L, Black

\$125

MODEL PLSQ-3-1222-GY
22" W x 36" L, Gray, NSF

\$121

MODEL PLSQ-4-1222-GY
22" W x 48" L, Gray, NSF

\$108

MODEL PLSQ-5-1222-GY
22" W x 60" L, Gray, NSF

\$133

Colors



Solid one piece plastic construction. 12" height meets all sanitary health codes. All weight capacities are 2,200lbs.

In Stock Ready to Ship!

Send purchase orders to sales@edainternational.com



ALUMINUM LUG CARTS

Price



MODEL AL-L-6 - HOLDS (6) LUGS

Dimensions: 19"W x 27"L x 71"H

\$197

All welded aluminum construction. For transporting and storage of all types of products, these work saving mobile carts minimize lifting and carrying. Standard lead time applies. Lugs sold separately.

Lugs also at special pricing!



MODEL AL-L-1-WM - HOLDS (1) LUG

Dimensions: 16"W x 24½"L x 26½"H

New ergonomic design, easier higher working height!

Price

\$68

SHEET PAN TRUCKS

MODEL D2027A-BPC

CAPACITY 300LBS

Dimensions: 18"W x 27¼"L x 52"H

All welded aluminum construction. Storing and transporting 18" x 26" trays. Top cross bars for added tray capacity. Standard lead time applies.



Price

\$232



Trays also at special pricing!

Send purchase orders to sales@edainternational.com

SANITARY

SOLUTIONS

STAINLESS STEEL MOBILE HAND SINK



5 Gallon clean water storage and 6 gallon waste water storage. Faucet blends hot and cold water. 110o F water supplied at .32 GPM

Keep it Sanitary Wash Your Hands!

Efficient solution for areas with restricted or limited availability of plumbing facility, while ensuring appropriate levels of hygiene. Faucet blends hot and cold water. UL listed water heater and pump. 5 gallon clean water storage and 6 gallon waste water storage. Standard lead time applies.



Model
STCT-BHD2426PUMP-KG

Price

\$2892



Model
STCT-BHD2426PUMP-AEF-KT
Unit with Electronic Eye Faucet

NEW

Price

\$3225

STAINLESS STEEL DEMO STATION WITH SINK

NEW



Perform Safe Food Sampling Built In Hand Sink Supports Hygienic Conditions

Our stainless steel demo cart features:

- Pull out hand sink -fully contained, hot and cold water
- 5 gallon water & waste containers
- Sneeze Guard
- Utility drawer
- Pull out poly board
- Microwave shelf
- 10 foot power cord

Mobile unit can be placed anywhere in your store.
Ideal demo station to keep food sampling safe for everyone!

Model: SSSC-2448-HSNKD-WM

24" W x 51" L x 38-3/4" working height

Uprights adjusts up to 66" H

Price

\$6912



Send purchase orders to sales@edainternational.com

NEW

SANITIZING CART

Sanitize Front Of The Store - Shopping Carts, Checkout Counters, Fixtures, etc.

Lightweight aluminum construction makes this cart easy to maneuver in store or out. Features top tray, two shelves for additional storage, garbage and paper towel holder. Holds everything you need to keep your store safe and clean. Standard lead time applies. Model D-2032-MP 20-1/2" W x 34-7/32" L x 40-1/8" H

Price

\$280



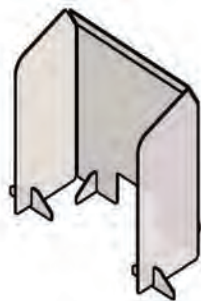
All In One Cleaning Station To Keep Your Store Sanitary!



orders@winholt.com

POINT OF CONTACT PROTECTION SHIELDS

They can be used in any public area to limit contact - supermarkets, general merchandise stores, restaurants, banks, pharmacies, hospitals, schools, etc. Dimensions: 30" W x 33" H, side panels are 15" W, Access window is 10" W x 6" H Clear Polycarbonate 1/4" thick panels Integrated sides optimizes stability. Easy to assemble just add the bottom brackets. Available in 30", 36" and 48" length. Standard lead times applies. **Minimum order 10 units.** Standard lead time applies.



Model SNG-333015-L-KT

Price

\$339



Model SNG-3330L15-L-KT

Price

\$197



Model SNG-3330R15-L-KT

Price

\$197



Model SNG-3330-L-KT

Price

\$135

Send purchase orders to sales@edainternational.com

FEATURED

SPECIALS

GRAB & GO SOLUTIONS

INSULATED TABLE DISPLAY MERCHANDISER



Price

\$4075

MODEL SSMIT-4848-MLC-SNG-KIT

Dimensions: 48"W x 48"L x 40¼"H

All welded stainless steel construction. Insulated ice pan, keeps food cold and creates a self service display. Mobility allows to be used in any location. Basket drain and shut off valve at the bottom. Includes (1) AL-L-1 with gray lug for draining. Standard lead time applies.



Shown with AL-L-1 under display for draining, ships with gray lug.

INSULATED ADJUSTABLE TABLE DISPLAY MERCHANDISER

MODEL SSMIT-3636MLC-CAN-ADJ

Dimensions: 36"W x 36"L x 51½"H

Price

\$3905

All welded stainless steel construction. Insulated removable ice bin keeps food cold and offers a self serve option to packaged merchandising. 2" Styrofoam installation, basket drain and shut off valve at the bottom. Includes removable lexan side panels and canopy. The table can be used flat or adjust to 7.5° or 15° angle. Standard lead time applies.



Send purchase orders to sales@edainternational.com

NEW

PICKING, CURBSIDE PICK-UP, DELIVERY CART

Efficient solution for on-line order picking, and curbside pick-up, delivery. Constructed of aluminum makes it light weight and easy to maneuver. Features: writing utensil tray, paper bag holder, hooks for plastic bags- making for a perfect picking station. Bumpers prevent damage to store fixtures, two shelf structure allows for additional storage of order curbside meals and picking totes.



Put Your Signage Here



Bag Holder Hooks

MODEL ALMCS-36-224-RCUH-HF

Dimensions: 24" W x 45 3/4" L x 26 1/4" H

Price

\$632

FRENCH FRY RACKS

MODEL FFR-18

HOLDS (18) BASKETS
Dimensions: 18" W x 27 1/4" L x 52" H



Price

\$395

MODEL FFR-27

HOLDS (27) BASKETS
Dimensions: 24 3/4" W x 27 1/2" L x 52" H

Price

\$410

All welded aluminum construction. Perfect for fast-paced, busy operations. Suited for both fries and frozen products in all stages of prep. Removable drip pan for easy cleaning and two handles for maneuvering. Baskets not included. Standard lead time applies.



BULK MOVER 6 BUSHEL

MODEL 30-6-A-WH

CAPACITY 500LBS
Dimensions: 24" W x 33" L x 536" H



Price

\$279

All welded aluminum frame. Tub is sanitary, washable and steam cleanable polyethylene. Standard lead time applies.



SINGLE INGREDIENT BIN

MODEL IB-1329-28H-21GAL



Durable smooth structural plastic. Fits under counter tops. Clear lid prevents cross contamination. Total Capacity: 21 Gallons Dimensions: 13" W x 29" L x 28" H

In Stock Ready to Ship!
ONLY WHILE SUPPLIES LAST!

Price

\$154



Send purchase orders to sales@edainternational.com

SMALLWARES

ALL In Stock Ready to Ship!

ABS PLASTIC

MODEL WHP-1826GABS

18"W x 26"L x 1"H Sold by the case of 24 units.

Price

\$13.50



ALUMINUM TRAYS

MODEL AP-1826

18"W x 26"L x 1"H Sold by the case of 12 units.

Price

\$14



LUGS & LUG LIDS



Price

\$13.50

MODEL WHPL-8GY - Gray Lug
MODEL WHPL-8WH - White Lug

Dimensions: 16"W x 25"L x 8"H

MODEL WHPL-8LID - Gray LID
MODEL WHPL-8LID - White Lid

Price

\$8.50

Ideal transporting and storing all types of products, warm or cold, food processing and preparation. 1.3 cu. ft., capacity holds up to 100 lbs. 4:1 nesting ratio. USDA approved material.

STAINLESS STEEL DISPLAY TRAYS



MODEL WHSSBX-612-2H

6"W x 12"L x 2"H

Price

\$28

MODEL WHSSBX-615-2H-2DH

FOB PA

6"W x 15"L x 2"H,
with 2 drain holes

Price

\$22.50

ECONOMY DUNNAGE RACK

All welded plated, heavy duty, steel wire. Elevates products off the ground allowing the area underneath to be cleaned for more sanitary conditions. Nests for storage and freight savings.



MODEL W-1014

10"W x 14"L x 8"H

Price

\$15

MODEL W-2414

14"W x 24"L x 8"H

Price

\$21.25

BAGEL BOARDS



MODEL BB1826

18"W x 26"L x 5/16"H

Sold by the case of 24 units.

Price

\$12.25

WIRE DIVIDERS

MODEL DIV-24128-EP

8"W x 12"W x 24"L
Vinyl Coated, White

Sold in lots of 10

ONLY 100 IN STOCK

ONLY WHILE SUPPLIES LAST!



Price

\$7.25

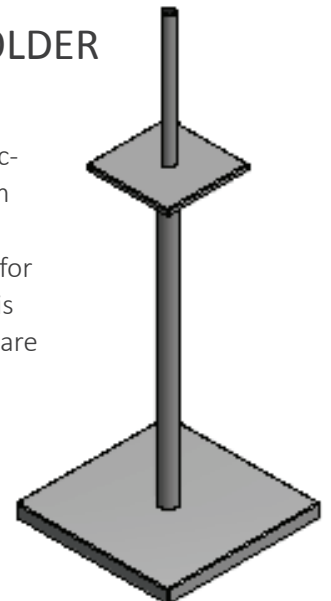
PLASTIC BAG HOLDER

MODEL PBH-1515

All stainless steel construction, rubber sheet bottom underneath secures the stand from slipping. Post for bag is 13" H, Unit height is 43", base is 15" x 14" square

Price

\$145



Send purchase orders to sales@edainternational.com

PRODUCTS

LOCKERS

USA & GLOBAL
MANUFACTURING



STEEL LOCKERS

Multi-user steel lockers, all welded, ships set up ready to use. Door pulls accept padlocks for positive latching. Doors are mesh grid vented or Louvered. All have closed bases.

In Stock Ready to Ship!

MODEL WL-618-15-LD

36" W x 15" D x 78" H

3 columns, 18 door, louvered doors, Gray

Price

\$540

MODEL WL-618

36" W x 12" D x 78" H

3 columns, 18 door, beige

Price

\$468

MODEL WL-66

12" W x 12" D x 78" H

1 column, 6 doors, beige

Price

\$159

MODEL WL-55 - FOB TX

12" W x 12" D x 66" H

1 column, 5 doors, beige

Price

\$141

MODEL MSLCK-1

COMBINATION LOCK, 6+ units

Price

\$12

WL-618



WL-66



WL-55



WL-618-15-LD



Send purchase orders to sales@edainternational.com

PRODUCTS

CARTS



FOLDING DISTRIBUTION CARTS

Frame constructed of zinc plated steel with 3 stainless steel Shelves. Efficiently move product form distribution centers to selling refrigeration. Folds for storage. 6" x 2" phenolic wheels. Load Capacity 500lbs

ALL In Stock Ready to Ship!

Egg Distribution

MODEL DC-2538-EG 24^{3/4}"W x 38"L x 67"H

MODEL DC-2526-EG 24^{3/4}"W x 26"L x 67"H

Price

\$581
\$463

Frame constructed of zinc plated and lacquer dip finish rolled steel. Both shelves fold in and out, load capacity 1200lbs

Milk Distribution

MODEL DC-3926-MC

25^{5/32}"W x 36^{9/16}"L x 65"H

Price

\$650

UTILITY STOCK NESTING CART

Constructed of all welded steel. Zinc electroplated deck and frame. Rounded corners will not damage, doors or frames. 6" polyurethane HD casters. FOB PA & TX

MODEL WMN-2448-WM

Dimensions: 29.5"W x 54"L x 39.5"H

In Stock Ready to Ship!

Price

\$320

STEEL HAND TRUCK

Constructed of all welded steel. Reinforced plate 8" D x 14" W, 10" Semi-Pneumatic Wheels. Finish Red

MODEL 508SP-RD

Dimensions: 20"W x 19"L x 47"H

In Stock Ready to Ship!

Price

\$78



Send purchase orders to sales@edainternational.com

We are ready to quote your next project!



The Chef's Choice

Winholt Chef Counters

Winholt designs chef counters to meet the needs of any restaurant or restaurant chain. We build to your customized spec, to maximize work flow and streamline food production. Our team is focused on the details to supply you with the highest quality product.

Our Chef Counters are UL and NSF Listed.
Options include but are not limited to:

- Overshelves
- Overshelf lighting
- Plate cabinets
- Sink cabinets
- Heat lamps
- Electrical outlets
- UL pre-wiring

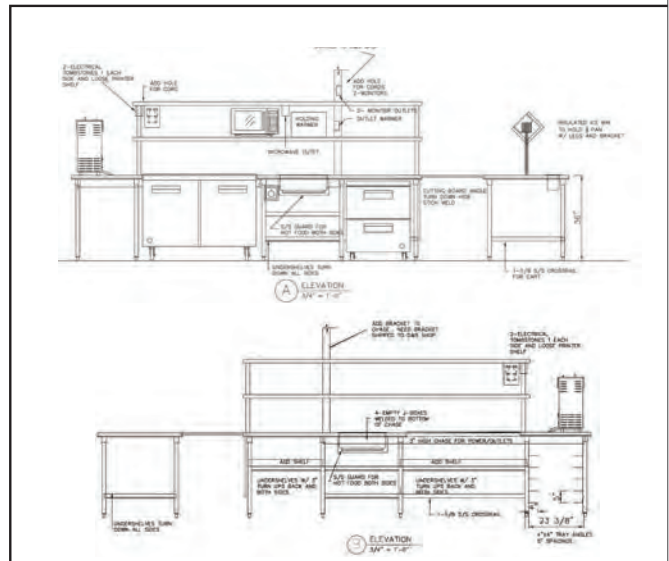
Call us at 305-669-1894 for a quote today!

Winholt offers a full line of stainless steel fabrication which includes: sinks, work tables, dish tables, cabinets, and equipment stands. We have the capability to supply all of requirements.

E.D.A. International Corp.
4907 SW 75th Ave.
Miami, FL 33155 USA
Phone: (305) 669-1894 ; Fax: (305) 669-1797
e-mail : sales@edainternational.com



Equipment Solutions Designed and Manufactured for Operational Efficiency, Cost Savings and Supply Chain Advantage!



Represented by :

E.D.A. International Corp.
4907 SW 75th Ave.
Miami, FL 33155, USA
Phone: (305) 669-1894
Fax: (305) 669-1797
e-mail : sales@edainternational.com



THANK YOU FOR **CHOOSING US** STAY HEALTHY

Things to know about these specials:

These promotional prices are valid on orders placed between
7.1.2020 to 9.30.2020.

FREE FREIGHT on orders of \$4,000+

Use Promotional Code EDA.FS.Q3.2020

On all Purchase Orders for Special Pricing

Send purchase orders to sales@edainternational.com

**CONTACT US FOR ALL OF YOUR CUSTOM DESIGN REQUIREMENTS. IF YOU DO NOT SEE IT,
CONTACT US, WE WILL DESIGN AND BUILD IT FOR YOU!**

VISIT US AT WWW.EDAINTELLATIONAL.COM